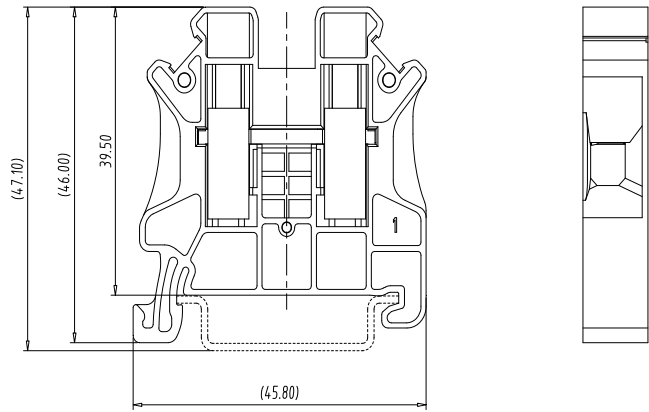
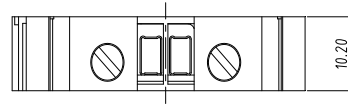


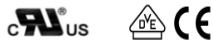
Rail Mounted Terminal Block — TK series — TK10



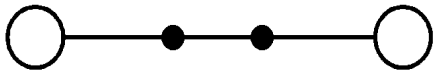
■ 图示(Pic. shown) : TK10(M19S)

| | |
|----------|---|
| General: | Rail Mounted terminal block Rated: 1000V, 57A 10mm ² |
| | Screw clamp unit: M4, 1.2N·m |
| | Mounting type: DIN Rail TH35-7.5 |

认证 (Approval) :



■ 电路图(Circuit diagram)



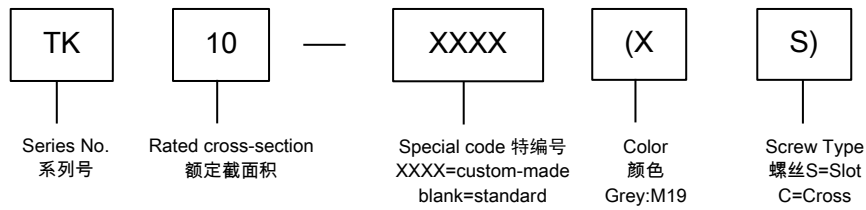
■ 尺寸(Dimensions)

| | |
|-----------------------|---------|
| 长度(Length) | 45.80mm |
| 宽度(Width) | 10.20mm |
| 安装高度(Height TH35-7.5) | 47.10mm |

■ 技术参数 Technical Data

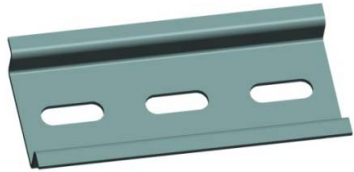
| | UL standard | | | IEC standard | | |
|---|----------------------|------|------|--|---------|--------|
| | UL Application group | | | IEC过电压别/污染等级(IEC overvoltage category /pollution degree) | | |
| UL应用组别(UL Application group) | B | C | D | III / 3 | III / 2 | II / 2 |
| IEC过电压别/污染等级(IEC overvoltage category /pollution degree) | | | | 1000 | -- | -- |
| 额定电压(Rated voltage) | 600V | 600V | 600V | 57A | -- | -- |
| 额定电流(Rated current) | 65A | 65A | 5A | | | |
| 额定连接容量(Rated connection capacity) | 20 ~ 6AWG | | | 0.5 ~ 10mm ² &16mm ² (sol) | | |
| 刚性导线横截面 (AWG) (Conductor cross section,solid) | | | | 20 ~ 6 | | |
| 柔性导线横截面 (AWG) (Conductor cross section,stranded) | | | | 20 ~ 6 | | |
| 刚性导线横截面 (mm ²) (Conductor cross section,rigid) | | | | 0.5 ~ 16 | | |
| 柔性导线横截面 (mm ²) (Conductor cross section,flexible) | | | | 0.5 ~ 10 | | |
| 具有相同横截面的2根实心导线 (mm ²) (2 conductors with cross section,solid) | | | | 0.5 ~ 4 | | |
| 具有相同横截面的2根柔性导线 (mm ²) (2 conductors with cross section,flexible) | | | | 0.5 ~ 4 | | |
| 柔性导线横截面, 不带绝缘套管的冷压头 (mm ²) (Conductor cross section flexible , with ferrule without plastic sleeve) | | | | 0.5 ~ 10 | | |
| 柔性导线横截面, 带绝缘套管的冷压头 (mm ²) (Conductor cross section flexible , with ferrule with plastic sleeve) | | | | 0.5 ~ 10 | | |
| 2根具有相同横截面的导线, 柔性, 带TWIN套管及塑料套管 (mm ²) (2 conductors with the same section flexible with TWIN ferrule and plastic sleeve) | | | | 0.5 ~ 6 | | |
| 绝缘材料(Insulation Material) | | | | PA66 UL94 V-0 | | |
| 电流承载部件材料和镀层 (Material & Plating of Current carrier) | | | | Copper alloy , Tin plated | | |
| 接线螺丝(Wire clamp unit Screw) , 最大扭矩(torque Max.) | | | | M4, 1.2N·m | | |
| 绝缘电阻(Insulation Resistance) | | | | 500MΩ or more at DC500V | | |
| 耐电压(1分钟)(Withstanding Voltage/1Min) | | | | 2200V | | |
| 额定冲击电压(Rated surge voltage) | | | | 8KV | | |
| 剥线长度(Wire stripping length) | | | | 10mm | | |
| 使用温度(Operating temperature) | | | | -40°C up to +115°C | | |

订购方式(How to order)



Rail Terminal Block — TK series — TK10 — Accessories

安装导轨 DIN Rail



P/N:TH35-7.5-ST



P/N:TH35-7.5-AL

盖板 Cover P/N: TKC2.5-10



标示牌 Marking label P/N: MARK10DB-M



桥接件 Plug-in bridge P/N: TKFB10-XXP



终端固定器 End clamp



P/N: ETNS01



P/N: ETNS03



P/N: ETNS02