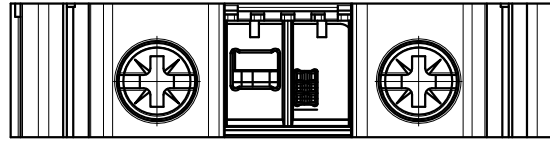


| REV | E.C.N NO. | CONTENT | CHK | DATE |
|------|-----------|--------------------|-----|------------|
| V0.1 | | Update the drawing | ZY | 2024.07.27 |



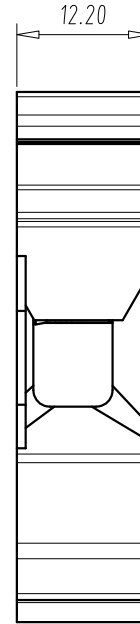
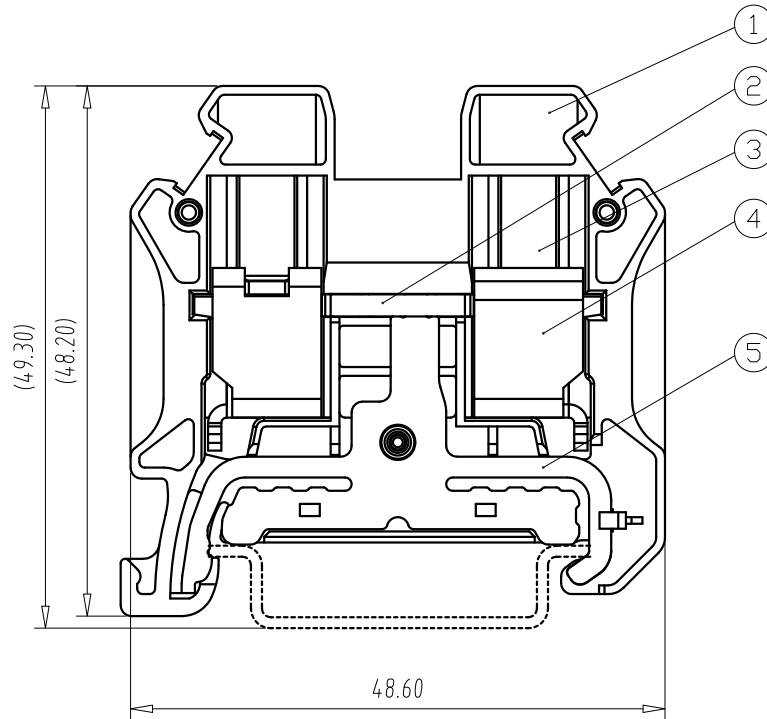
NOTES:

1. IEC:

- Rate Impulse Voltage:8000V;
- Insulation Resistance:500MΩ or more at DC500V;
- Contact Resistance: ≤5mΩ
- Material Group: I;
- Pollution Degree:3;
- Overvoltage Category:III;
- Suitable Electric Wire:1.5mm²~16mm² & 25mm² (rigid)

2. UL:

- Rating:600V
- Suitable Electric Wire:16AWG~3AWG
- 3.Using Temperature Range:-40°C~+115°C;
- 4. Screw Torque Value:2.5N·m
- 5.Strip length:13.0mm
- 6. RoHS compliance;



TK16-PE(C) → Cross screw

| 5 | GROUNDING | 3 | H-Copper Alloy | Tin Plated |
|------|-----------------|------|----------------|--------------|
| 4 | BLOCK | 2 | STEEL | M5/Zn Plated |
| 3 | SCREW | 2 | STEEL | M5/Zn Plated |
| 2 | CURRENT CARRIER | 1 | Copper Alloy | Tin Plated |
| 1 | HOUSING | 1 | PA66 | UL94 V-0 |
| ITEM | NAME OF PART | Q'TY | MATERIAL | NOTE |

| Total Pitch Tolerances in mm | | | | | | | | | | Nominal dimension range in mm | | | | | | | | | |
|------------------------------|-------|------|-------|-------|-------|-------|-------|-------|------|-------------------------------|-------|-------|-------|-------|-------|-------|-------|-------|------|
| over | over | over | over | over | over | over | over | over | over | over | over | over | over | over | over | over | over | over | over |
| 0 | 30 | 53 | 70 | 90 | 115 | 150 | 200 | 250 | 320 | 0 | 30 | 53 | 70 | 90 | 115 | 150 | 200 | 250 | 320 |
| to | to | to | to | to | to | to | to | to | to | to | to | to | to | to | to | to | to | to | to |
| 30 | 53 | 70 | 90 | 115 | 150 | 200 | 250 | 320 | | 30 | 53 | 70 | 90 | 115 | 150 | 200 | 250 | 320 | |
| ±0.20 | ±0.25 | ±0.3 | ±0.35 | ±0.44 | ±0.55 | ±0.70 | ±0.85 | ±1.00 | | ±0.25 | ±0.30 | ±0.35 | ±0.44 | ±0.55 | ±0.70 | ±0.80 | ±0.90 | ±1.20 | |

| | | | | | | | |
|------|----|------|------------|---|--------------|----------|-----|
| DWG. | LF | DATE | 2022.03.12 | UNITS | MM | SHEET/OF | 1/1 |
| CHK. | | DATE | | SCALE | 15 : 1 | A4 | |
| APP. | | DATE | | NAME: TK16-PE(C) | | | |
| | | | | TIANLI ELECTRICAL MACHINERY(NINGBO)CO.,LTD. | | | |
| | | | | DWGNO. | TLDW-TK16PEC | | |