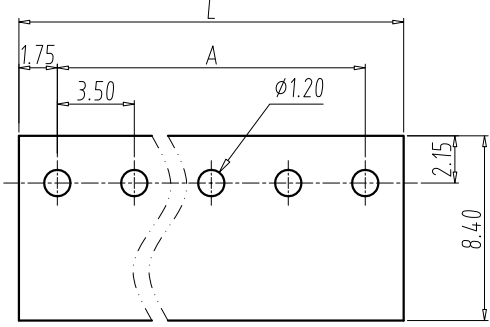
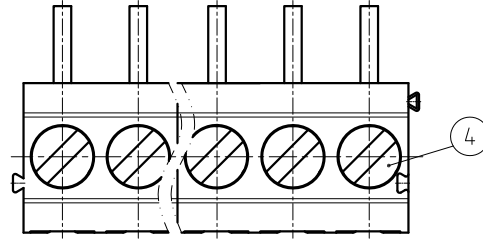


FILE:

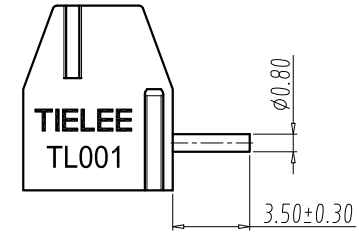
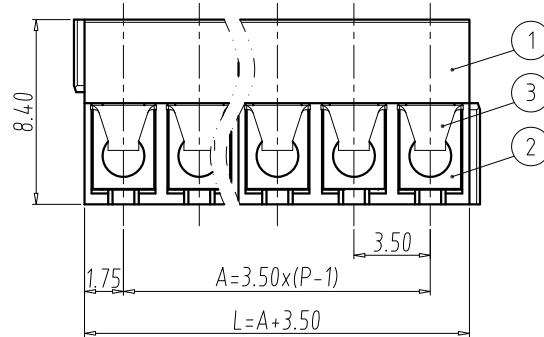
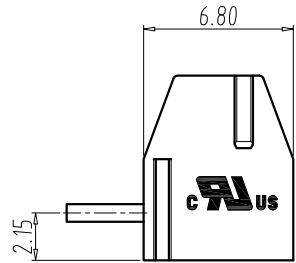
REV	E.C.N NO.	CONTENT	CHK	DATE
V1.0		ORIGINAL	ZZW	2021.06.16



**PCB LAYOUT**  
S=3:1



- NOTES:
- UL:  
Rating:300V, 10A  
Insulation Withstands Voltage:AC1600V/MIN  
Suitable Electric Wire:24AWG~16AWG
  - IEC:  
Rating:130V, 10A  
Rate Impulse Voltage:2500V  
Insulation Resistance:500MΩ or more at DC500V  
Contact Resistance:≤5mΩ  
Material Group: I  
Pollution Degree:2  
Overvoltage Category:III  
Suitable Electric Wire:0.25mm<sup>2</sup>~1.0mm<sup>2</sup>
  - Using Temperature Range:-40°C~+105°C
  - Screw Torque Value:0.2N·m
  - Strip length:5.0~6.0mm
  - RoHS compliance



DIM	P	2	3	4	5	6	7	8	9	10	11	12	
A		3.5	7	10.5	14	17.5	21	24.5	28	31.5	35	38.5	
L		7	10.5	14	17.5	21	24.5	28	31.5	35	38.5	42	
DIM	P	13	14	15	16	17	18	19	20	21	22	23	24
A		4.2	4.5	4.9	5.2	5.6	5.9	6.3	6.6	7.0	7.3	7.7	8.0
L		4.5	4.9	5.2	5.6	5.9	6.3	6.6	7.0	7.3	7.7	8.0	8.4

Total Pitch Tolerances in mm								Nominal dimension range in mm									
over	over	over	over	over	over	over	over	over	over	over	over	over	over	over	over	over	over
0	30	53	70	90	115	150	200	250	300	350	400	450	500	550	600	650	700
to	to	to	to	to	to	to	to	to	to	to	to	to	to	to	to	to	to
30	53	70	90	115	150	200	250	300	350	400	450	500	550	600	650	700	750
±0.20	±0.25	±0.30	±0.35	±0.40	±0.55	±0.70	±0.85	±1.00	±0.25	±0.30	±0.35	±0.40	±0.55	±0.70	±0.80	±0.90	±1.20

4	SCREW	P	STEEL	M2/Zn Plated
3	SPRING COIL	P	Stainless Steel	/
2	SOLDER PIN	P	Copper Alloy	Tin Plated
1	HOUSING	/	PA66	UL94V-0
ITEM	NAME OF PART	Q'TY	MATERIAL	NOTE

DWG.	ZZW	DATE	2021.06.16	UNITS	MM	SHEET/OF	1/1
CHK.		DATE		SCALE	3:1	A4	
APP.		DATE		NAME	TL001R-XXP-XS		
 ELECTRICAL MACHINERY(NINGBO)CO.,LTD.				DWGNO.	TLDW-TL001RXXPX5		