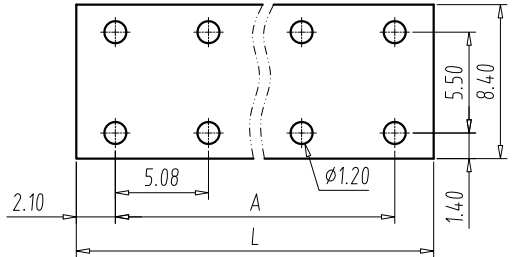
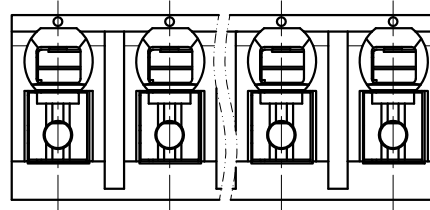


FILE: TLM004\TLM-004VT-5.08-XXP-X

REV	E.C.N NO.	CONTENT	CHK	DATE
V1.0		ORIGINAL	YHZ	2022.06.10

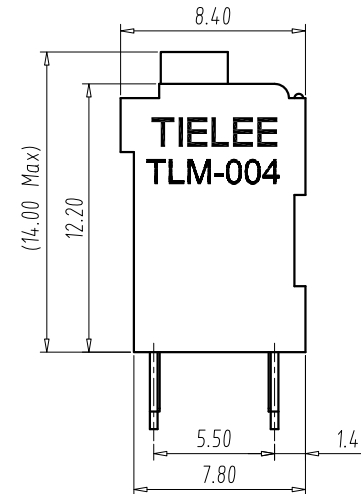
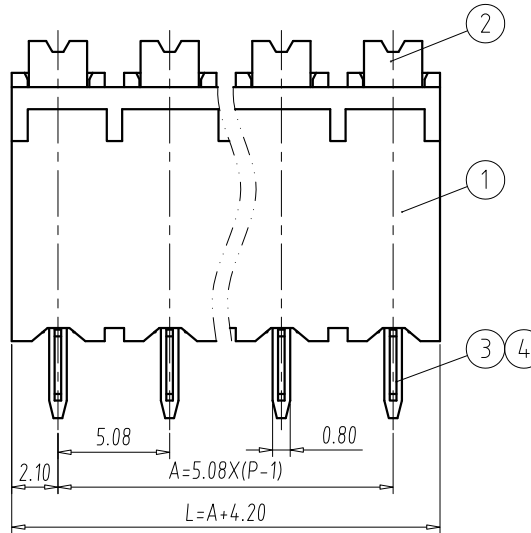
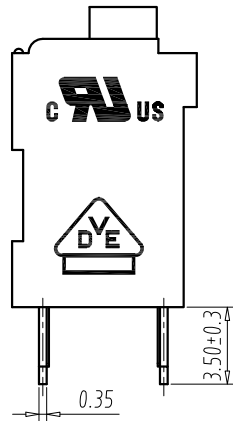


PCB LAYOUT
S=2.5:1



NOTES:

- UL:
 - Rating:300V, 12A
 - Insulation Withstands Voltage:AC1600V/MIN
 - Suitable Electric Wire:28AWG~16AWG
- IEC:
 - Rating:320V, 17.5A
 - Rate Impulse Voltage:4000V
 - Insulation Resistance:500M Ω or more at DC500V
 - Contact Resistance: $\leq 5m\Omega$
 - Material Group: I
 - Pollution Degree:2
 - Overvoltage Category:III
 - Suitable Electric Wire:0.2mm²~1.5mm²
- Using Temperature Range:-40 $^{\circ}$ C~+130 $^{\circ}$ C
- Strip length:8.0~9.0mm
- RoHS compliance



DIM	P	2	3	4	5	6	7	8	9	10	11	12	
A		5.08	10.16	15.24	20.32	25.4	30.48	35.56	40.64	45.72	50.8	55.88	
L		9.28	14.36	19.44	24.52	29.6	34.68	39.76	44.84	49.92	55.0	60.08	
DIM	P	13	14	15	16	17	18	19	20	21	22	23	24
A		60.96	66.04	71.12	76.2	81.28	86.36	91.44	96.52	101.6	106.68	111.76	116.84
L		65.16	70.24	75.32	80.4	85.48	90.56	95.64	100.72	105.8	110.88	115.96	121.04

Total Pitch Tolerances in mm																Nominal dimension range in mm															
over	over	over	over	over	over	over	over	over	over	over	over	over	over	over	over	over	over	over	over	over	over	over	over	over	over	over	over	over	over		
0	30	53	70	90	115	150	200	250	0	30	53	70	90	115	150	200	250	0	30	53	70	90	115	150	200	250	0	30			
to	to	to	to	to	to	to	to	to	to	to	to	to	to	to	to	to	to	to	to	to	to	to	to	to	to	to	to	to			
30	53	70	90	115	150	200	250	320	30	53	70	90	115	150	200	250	320	30	53	70	90	115	150	200	250	320	30				
±0.20	±0.25	±0.30	±0.35	±0.44	±0.55	±0.70	±0.85	±1.00	±0.25	±0.30	±0.35	±0.44	±0.55	±0.70	±0.80	±0.90	±1.20														

4	SOLDER PIN	P	H-Copper Alloy	Tin Plated
3	SPRING	P	Stainless	/
2	LEVER	P	PA-HT	UL94 V-0
1	HOUSING	1	PA-HT	UL94 V-0
ITEM	NAME OF PART	Q'TY	MATERIAL	NOTE

DWG.	YHZ	DATE	2021.10.20	UNITS	MM	SHEET/OF	1/1
CHK.		DATE		SCALE	3:1	A4	
APP.		DATE		NAME TLM-004VT-5.08-XXP-X			
				ELECTRICAL MACHINERY(NINGBO)CO.,LTD.			
				DWGNO. TLDW-TLM004VT5.08XXPX			