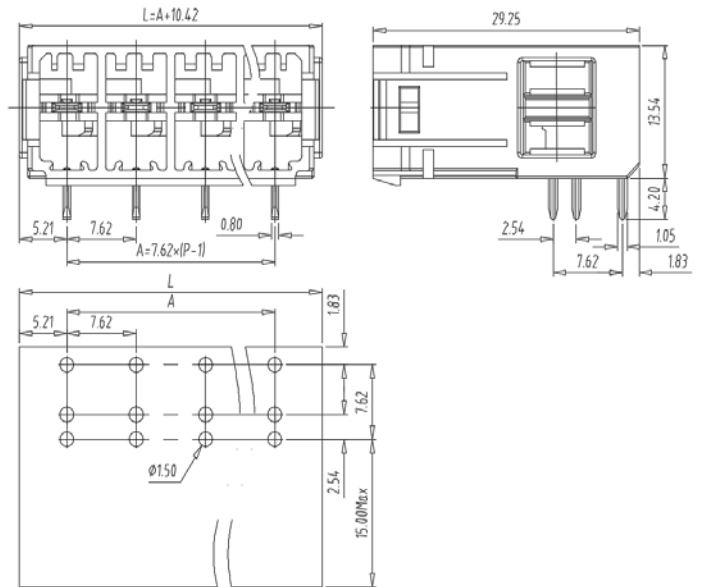
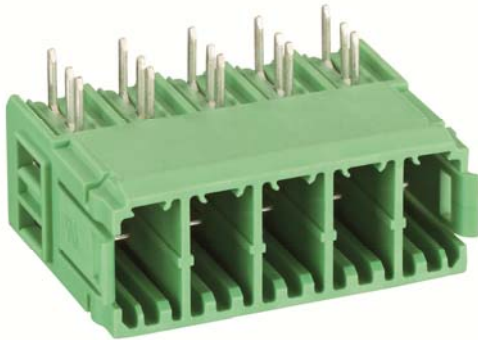





PCB Connector — TLP series (Pin header)— TLPHC-501RL



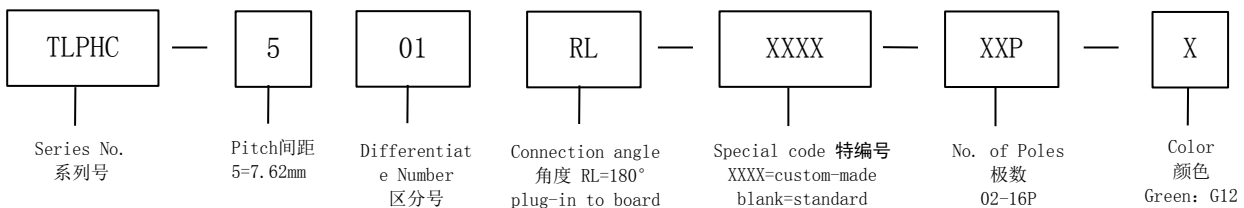
■ 图示 (Pic. shown): TLPHC-501RL-05P-G12

General.	PCB Connector	Rated : 630V, 41A
	Single row , 7.62mm pitch ,	02-16 Pole
	Orientation:180° (plug-in to board)	

认证 (Approval) :   

技术参数 Technical Data	UL standard			IEC standard		
	UL Application group			IEC过电压别/污染等级 (IEC overvoltage category /pollution degree)		
UL应用组别 (UL Application group)	B	C	D	III / 3	III / 2	II / 2
IEC过电压别/污染等级 (IEC overvoltage /pollution degree)				630V	630V	1000V
额定电压 (Rated voltage)	300V	300V	600V	41A	41A	41A
额定电流 (Rated current)	41A	41A	5A			
额定连接容量 (Rated connection capacity)	--			--		
绝缘材料 (Insulation Material)	PA66 UL94 V-0					
绝缘材料组别 (Material group)	I					
电流承载部件材料和镀层 (Material & Plating of Current)	Copper alloy , Tin plated					
接线弹片材料 (Material of Clamp spring)	--					
耐电压 (1分钟) (Withstanding Voltage/1Min)	3300V					
额定冲击电压 (Rated surge voltage)	6000V					
接线螺丝 (Wire clamp unit Screw), 最大扭矩 (torque Max.)	--					
固定螺丝 (Mounting Screw), 扭矩 (torque)	--					
剥线长度 (Wire stripping length)	--					
使用温度 (Operating temperature)	-40° C up to +115° C (UL) / -40° C up to +120° C (IEC)					
存储温度 (Storage temperature)	-40° C up to +70° C					
存储相对湿度 (Storage relative humidity)	≤70%					
焊接方式 (Soldering recommend)	Wave soldering , 260° C 8S Max					

■ 订购方式 (How to order)



Web:www.tielee.com TEL:+86-574-6347-9600, 6389-6436 Mail : sale@china-tianli.cn
地址:中国浙江省宁波杭州湾新区庵东工业园区纬三路138号
ADD: 138, Weisan Rd., Andong Development Zone, Hangzhou Bay Area, Ningbo, Zhejiang, China

■ 编码片 Coding key



P/N:
TLPCK-004-S

■ 插头 (Female Connector) — single row



P/N: TLPS-501
Wiring orientation:
180° (wire to plug-in)
Rated : 1000V, 41A, 6.0mm²
Screw clamp unit: M3 , 0.8N.m